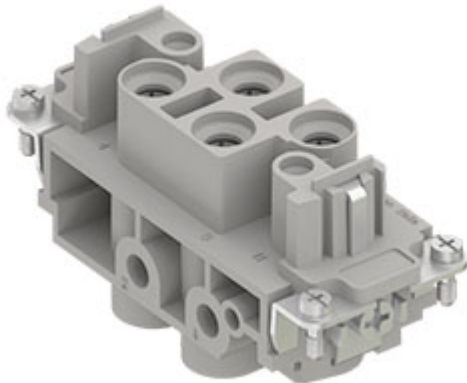


Part number
CXF 4/0



Female insert, CX series, screw terminal connection, 4 poles + PE, 80 A 830 V 8 kV 3, size "77.27"

Product description		Material properties	
Product type	Insert	Main material	Polycarbonate (PC)
Series	CX	Other materials	Contacts: copper alloy
Connection type	Screw terminal connection	Colour	RAL 7032 grey
Gender	Female	RoHs conformity	Compliant with exemption 6(c); copper alloy containing up to 4% lead by weight
N. of poles	4 poles +	China RoHs - EFUP	50
Size	Size 77.27	REACH SVHC substances	Yes Lead
Technical data		SCIP number	1a9c93ff-0445-4a16-81e3-1609ac5274d6
Current	80 A	Approvals / Standards	
Voltage	830 V	Reference standard	EN 61984:2009-06
Rated impulse withstand voltage	8 kV	Certifications	CSA, CQC, DNV, BV, EAC
Pollution degree	3	UL	ECBT2
Rated voltage according to UL/CSA	600 V	cUL	ECBT8
Wire cross-section	4,00 mm ² - 16,00 mm ²	General ordering information	
AWG size	12 - 6	EAN13 code	8015747042314
Contact type	Turned silver plated	eCl@ss 8.1	27440205
IP degree of protection	IP20 without enclosure, IP65/IP66/IP68/IP69 with enclosure	ETIM 7.0	EC000438
Further technical details		Packaging Information	
Characteristics according to EN 61984	80A 830V 8kV 3	Packaging length	200,00 mm
Mating cycles	≥ 500	Packaging height	165,00 mm
Insulation resistance	≥ 10 GΩ	Packaging width	200,00 mm
Contact resistance	≤ 0,3 mΩ	Packaging weight	3,81 kg
Weight	113,00 g	Packaging volume	6,60 dm ³
Operating temperature range (min, max)	-40 °C ... +125 °C	Packaging description	Carton box
UL 94 flammability rating	V-0	Packaging quantity	30 Pcs
		Packaging EAN code	8015747191814
		Sub-packaging length	87,00 mm
		Sub-packaging height	36,00 mm
		Sub-packaging width	180,00 mm
		Sub-packaging weight	0,64 kg
		Sub-packaging volume	0,56 dm ³
		Sub-packaging description	Carton tray
		Sub-packaging quantity	5 Pcs
		Sub-packaging EAN barcode	8015747042321

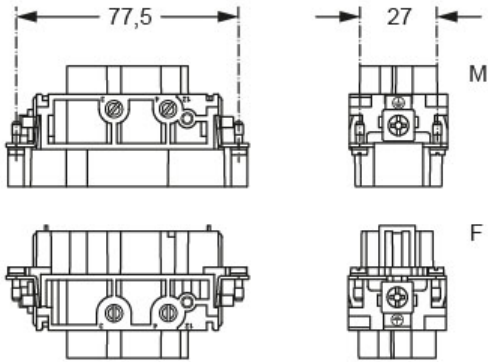
Part number

CXF 4/0

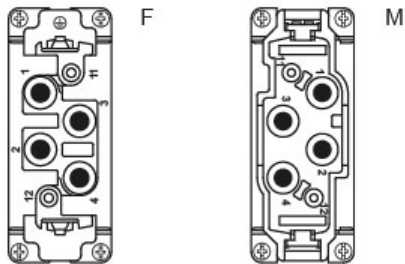


Catalogue drawings

Derating curves



contacts side (front view)



CX 4/0 poles connector inserts
Maximum current load derating diagram

