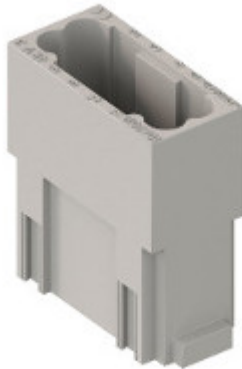


Part number

CX 12 DM



Male modular insert, Mixo series, crimp connection, 12 poles, 1 module, 10 A 250 V 4 kV 3

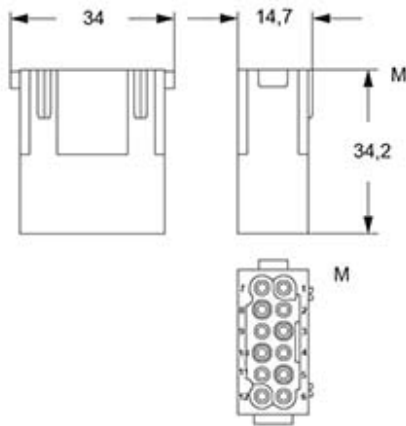
| Product description | | Material properties | |
|---|--|----------------------------------|-------------------------|
| Product type | Modular insert | Main material | Polycarbonate |
| Series | Mixo | Colour | RAL 7032 grey |
| Connection type | Crimp connection | RoHs conformity | Compliant |
| Gender | Male | China RoHs - EFUP | E |
| N. of poles | 12 poles | REACH SVHC substances | No |
| Size | 1 module | Approvals / Standards | |
| Specification | Standard & HNM (High Number of Matings) | Reference standard | EN 61984:2009-06 |
| Technical data | | Certifications | CSAc, CQC, DNV, BV, EAC |
| Current | 10 A | UL | ECBT2 |
| Voltage | 250 V | cUL | ECBT8 |
| Rated impulse withstand voltage | 4 kV | General ordering information | |
| Pollution degree | 3 | EAN13 code | 8015747042062 |
| Rated voltage according to UL/CSA | 600 V | eCl@ss 8.1 | 27440205 |
| IP degree of protection | IP20 without enclosure, IP65/IP66/IP68/IP69 with enclosure | ETIM 7.0 | EC000438 |
| Further technical details | | Packaging Information | |
| Characteristics according to EN 61984 | 10A 250V 4kV 3 | Packaging length | 180,00 mm |
| Mating cycles | ≥ 500 | Packaging height | 120,00 mm |
| Insulation resistance | ≥ 10 GΩ | Packaging width | 155,00 mm |
| Contact resistance | ≤ 3 mΩ | Packaging weight | 0,76 kg |
| Weight | 8,80 g | Packaging volume | 3,35 dm ³ |
| Operating temperature range (min, max) | -40 °C ... +125 °C | Packaging description | Carton box |
| UL 94 flammability rating | V-0 | Packaging quantity | 60 Pcs |
| | | Packaging EAN code | 8015747221320 |
| | | Sub-packaging length | 35,00 mm |
| | | Sub-packaging height | 40,00 mm |
| | | Sub-packaging width | 155,00 mm |
| | | Sub-packaging weight | 0,13 kg |
| | | Sub-packaging volume | 0,22 dm ³ |
| | | Sub-packaging description | Carton tray |
| | | Sub-packaging quantity | 10 Pcs |
| | | Sub-packaging EAN barcode | 8015747042079 |

Part number

CX 12 DM



Catalogue drawings



Derating curves

