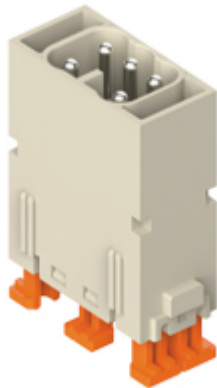


Part number

# CX 05 SHM



Male modular insert, Mixo series, SQUICH® spring terminal connection without tools, 5 poles, 1 module, 16 A 400 V 6 kV 3

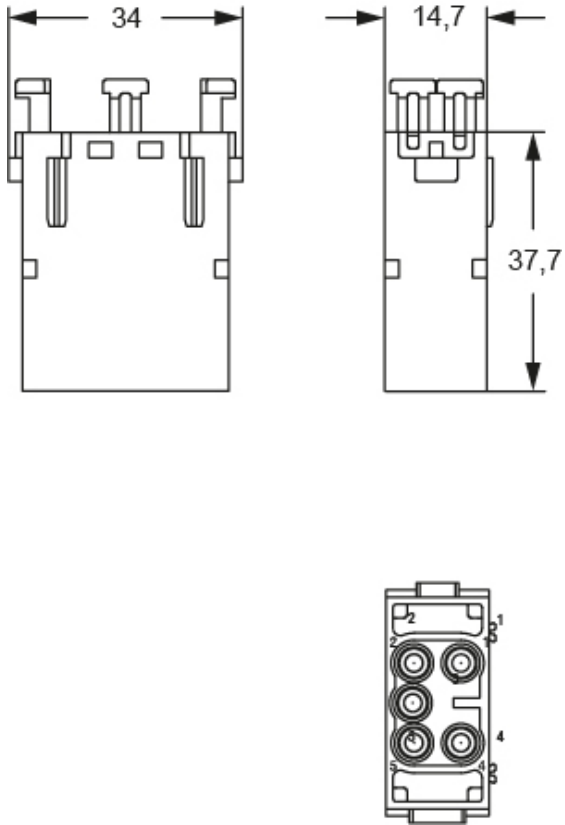
Product description		Material properties	
<b>Product type</b>	Modular insert	<b>Main material</b>	Polycarbonate
<b>Series</b>	Mixo	<b>Colour</b>	RAL 7032 grey
<b>Connection type</b>	SQUICH® spring terminal connection without tools	<b>RoHs conformity</b>	Compliant with exemption 6(c): copper alloy containing up to 4% lead by weight
<b>Gender</b>	Male	<b>China RoHs - EFUP</b>	50
<b>N. of poles</b>	5 poles	<b>REACH SVHC substances</b>	Yes Lead
<b>Size</b>	1 module	<b>SCIP number</b>	1a9c93ff-0445-4a16-81e3-1609ac5274d6
Technical data		Approvals / Standards	
<b>Current</b>	16 A	<b>Certifications</b>	DNV, BV, EAC, CQC
<b>Voltage</b>	400 V	<b>UL</b>	ECBT2, PVVA2
<b>Rated impulse withstand voltage</b>	6 kV	<b>cUL</b>	ECBT8, PVVA8
<b>Pollution degree</b>	3	<b>General ordering information</b>	
<b>Rated voltage according to UL/CSA</b>	600 V	<b>EAN13 code</b>	8015747263634
<b>Wire cross-section</b>	0,14 mm <sup>2</sup> - 2,50 mm <sup>2</sup>	<b>eCl@ss 8.1</b>	27440205
<b>AWG size</b>	26 - 14	<b>ETIM 7.0</b>	EC000438
<b>Contact type</b>	Turned silver plated	<b>Packaging Information</b>	
<b>IP degree of protection</b>	IP20 without enclosure, IP65/IP66/IP68/IP69 with enclosure	<b>Packaging length</b>	180,00 mm
<b>Further technical details</b>		<b>Packaging height</b>	120,00 mm
<b>Characteristics according to EN 61984</b>	16 A 400 V 6 kV 3	<b>Packaging width</b>	155,00 mm
<b>Mating cycles</b>	≥ 500	<b>Packaging weight</b>	1,28 kg
<b>Insulation resistance</b>	≥ 10 GΩ	<b>Packaging volume</b>	3,35 dm <sup>3</sup>
<b>Contact resistance</b>	≤ 3 mΩ	<b>Packaging description</b>	Carton box
<b>Weight</b>	18,50 g	<b>Packaging quantity</b>	60 Pcs
<b>Operating temperature range (min, max)</b>	-40 °C ... +125 °C	<b>Packaging EAN code</b>	8015747263641
<b>Conductors stripping length</b>	9...11 mm	<b>Sub-packaging length</b>	155,00 mm
<b>UL 94 flammability rating</b>	UL 94V-0	<b>Sub-packaging height</b>	48,00 mm
		<b>Sub-packaging width</b>	35,00 mm
		<b>Sub-packaging weight</b>	0,21 kg
		<b>Sub-packaging volume</b>	0,26 dm <sup>3</sup>
		<b>Sub-packaging description</b>	Carton tray
		<b>Sub-packaging quantity</b>	10 Pcs
		<b>Sub-packaging EAN barcode</b>	8015747263658

Part number

# CX 05 SHM



Catalogue drawings



Derating curves

