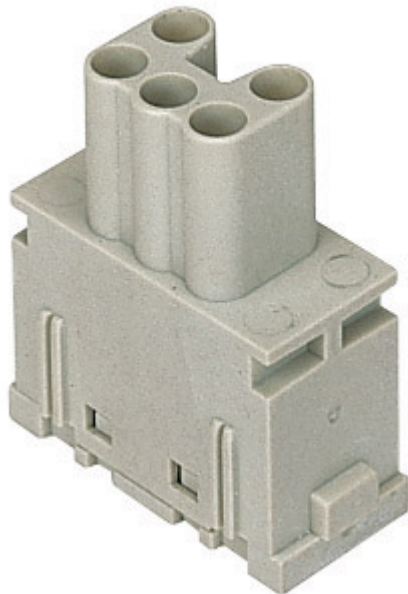


Part number

CX 05 SF



Female modular insert, Mixo series, spring terminal connection, 5 poles, 1 module, 16 A 400 V 6 kV 3

Product description		Material properties	
Product type	Modular insert	Main material	Polycarbonate
Series	Mixo	Colour	RAL 7032 grey
Connection type	Spring terminal connection	RoHs conformity	Compliant with exemption 6(c): copper alloy containing up to 4% lead by weight
Gender	Female	China RoHs - EFUP	50
N. of poles	5 poles	REACH SVHC substances	Yes Lead
Size	1 module	SCIP number	1a9c93ff-0445-4a16-81e3-1609ac5274d6
Technical data		Approvals / Standards	
Current	16 A	Reference standard	EN 61984:2009-06
Voltage	400 V	Certifications	CSA, CQC, DNV, BV, EAC
Rated impulse withstand voltage	6 kV	UL	ECBT2
Pollution degree	3	cUL	ECBT8
Rated voltage according to UL/CSA	600 V	General ordering information	
Wire cross-section	0,14 mm ² - 2,50 mm ²	EAN13 code	8015747096041
AWG size	26 - 14	Packaging Information	
Contact type	Turned silver plated	Packaging length	180,00 mm
IP degree of protection	IP20 without enclosure, IP65/IP66/IP68/IP69 with enclosure	Packaging height	120,00 mm
Further technical details		Packaging width	155,00 mm
Characteristics according to EN 61984	16A 400V 6kV 3; 16A 500V 6kV 2	Packaging weight	1,24 kg
Insulation resistance	≥ 10 GΩ	Packaging volume	3,35 dm ³
Contact resistance	≤ 3 mΩ	Packaging description	Carton box
Weight	17,00 g	Packaging quantity	60 Pcs
Operating temperature range (min, max)	-40 °C ... +125 °C	Packaging EAN code	8015747221221
UL 94 flammability rating	V-0	Sub-packaging length	35,00 mm
		Sub-packaging height	40,00 mm
		Sub-packaging width	155,00 mm
		Sub-packaging weight	0,21 kg
		Sub-packaging volume	0,22 dm ³
		Sub-packaging description	Carton tray
		Sub-packaging quantity	10 Pcs
		Sub-packaging EAN barcode	8015747096058

Part number

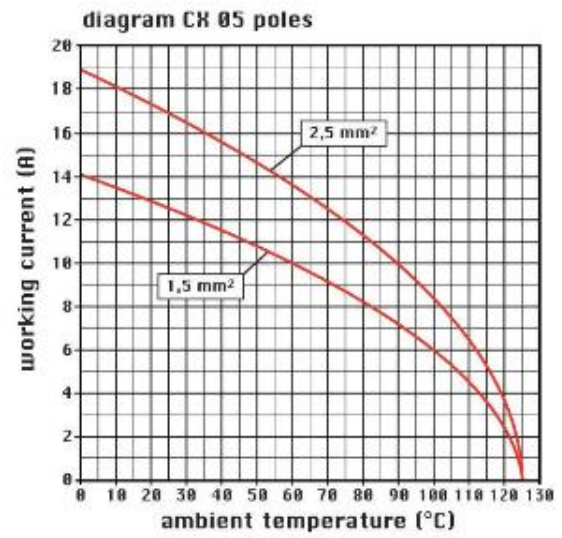
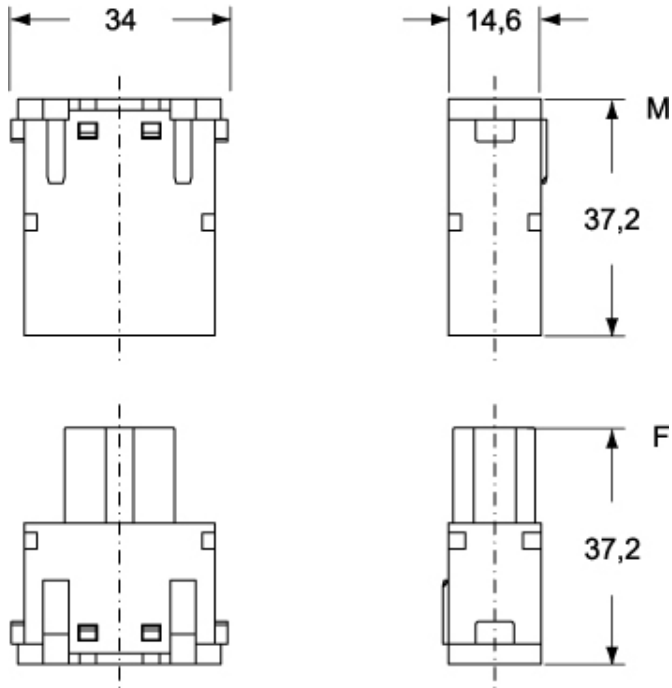
CX 05 SF



Catalogue drawings

Catalogue drawings

CX 05 SM



CX 05 SF

