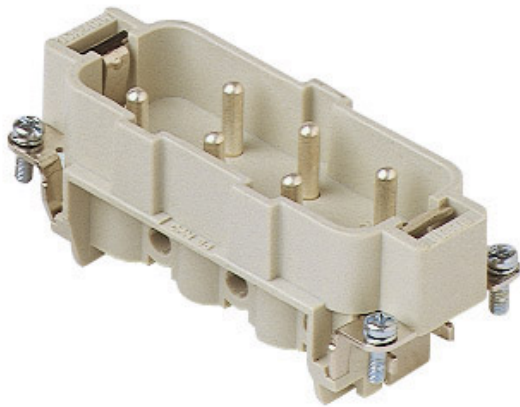



Part number

CPM 06 X



Male insert, CP series, screw terminal connection, 6 poles + PE, 35 A 400/690 V 6 kV 3, size "77.27", without plate

Product description		Material properties	
Product type	Insert	Main material	Polycarbonate (PC)
Series	CP	Other materials	Contacts: copper alloy
Connection type	Screw terminal connection	Colour	RAL 7032 grey
Gender	Male		Compliant with exemption 6(c): copper alloy containing up to 4% lead by weight
N. of poles	6 poles + 	RoHs conformity	
Size	Size 77.27	China RoHs - EFUP	50
Specification	Without plate, for prepared conductors	REACH SVHC substances	Yes Lead
Technical data		SCIP number	1a9c93ff-0445-4a16-81e3-1609ac5274d6
Current	35 A	Approvals / Standards	
Voltage	400 - 690 V	Reference standard	EN 61984:2009-06
Rated impulse withstand voltage	6 kV	Certifications	CSA, CQC, DNV, BV, EAC
Pollution degree	3	UL	ECBT2
Rated voltage according to UL/CSA	600 V	General ordering information	
Wire cross-section	0,75 mm ² - 6,00 mm ²	EAN13 code	8015747213424
AWG size	18 - 10	Packaging Information	
Contact type	Turned silver plated	Packaging length	230,00 mm
IP degree of protection	IP20 without enclosure, IP65/IP66/IP68/IP69 with enclosure	Packaging height	110,00 mm
		Packaging width	180,00 mm
		Packaging weight	1,89 kg
		Packaging volume	4,55 dm ³
Further technical details		Packaging description	Carton box
Mating cycles	≥ 500	Packaging quantity	20 Pcs
Insulation resistance	≥ 10 GΩ	Packaging EAN code	8015747213455
Contact resistance	≤ 0,5 mΩ	Sub-packaging length	87,00 mm
Weight	81,50 g	Sub-packaging height	36,00 mm
Operating temperature range (min, max)	-40 °C ... +125 °C	Sub-packaging width	180,00 mm
UL 94 flammability rating	V-0	Sub-packaging weight	0,47 kg
Torque for main contact	M4: 1,2 Nm; 10,6 lb.in (Ph1 or 0,8 x 4 mm)	Sub-packaging volume	0,56 dm ³
		Sub-packaging description	Carton tray
		Sub-packaging quantity	5 Pcs
		Sub-packaging EAN barcode	8015747213462