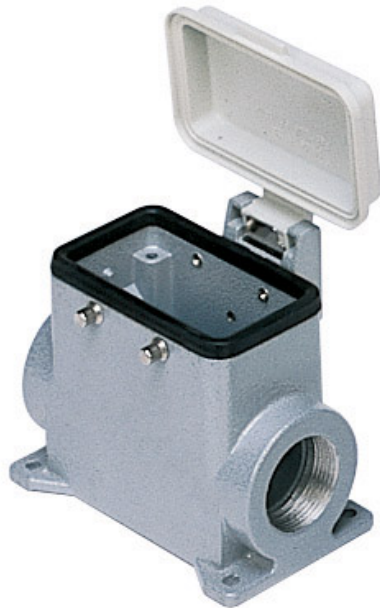


Part number

# CMAP 03CP229



Surface mounting housing, 830V series, with 4 pegs, Pg29 x 2 cable entry, size "57.27", high construction, with plastic cover

## Product description

<b>Product type</b>	Surface mounting housing
<b>Series</b>	830V
<b>Closing type</b>	With 4 pegs
<b>Size</b>	Size 57.27
<b>Cable entry</b>	With cable entry Pg29 x 2
<b>Specification</b>	High construction, with plastic cover

## Technical data

**IP degree of protection** IP65

## Further technical details

**Operating temperature range (min, max)** -40°C...+125°C

## Material properties

<b>Colour</b>	RAL 7040 grey
<b>RoHs conformity</b>	Compliant
<b>China RoHs - EFUP</b>	E
<b>REACH SVHC substances</b>	No
<b>Approvals / Standards</b>	
<b>Certifications</b>	DNV, BV
<b>UL</b>	ECBT2
<b>cUL</b>	ECBT8

## General ordering information

**EAN13 code** 8015747029155

## Packaging Information

<b>Sub-packaging description</b>	Plastic packaging
<b>Sub-packaging quantity</b>	5 Pcs
<b>Sub-packaging EAN barcode</b>	8015747104449

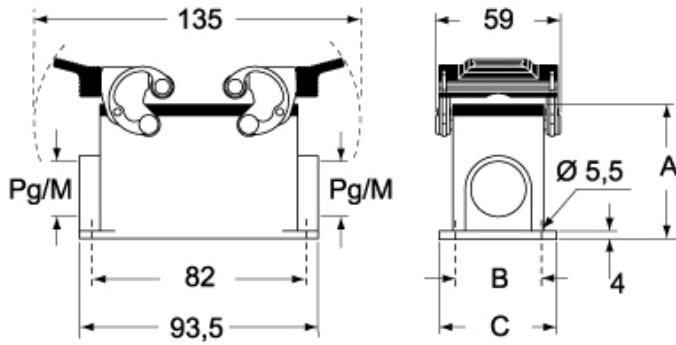
Part number

# CMAP 03CP229



Catalogue drawings

## CMP CMAP - MMP MMAP



## CMP CS/CP CMAP CS/CP - MMP CS/CP MMAP CS/CP



	A	B	C
<b>CMP / MMP</b>	57	40	52
<b>CMAP / MMAP</b>	73	45	57
<b>CMP CS / MMP CS</b>	57	40	52
<b>CMAP CS / MMAP CS</b>	73	45	57
<b>CMP CP / MMP CP</b>	57	40	52
<b>CMAP CP / MMAP CP</b>	73	45	57