

Part number
CGI 10



Bulkhead mounting housing, IP68 series, for 2 screws, size "57.27"

Product description

Product type	Bulkhead mounting housing
Series	IP68
Closing type	With 2 screws
Size	Size 57.27
Cable entry	Without cable entry

Technical data

IP degree of protection	IP66 / IP68 / IP69
--------------------------------	--------------------

Further technical details

Weight	140,50 g
Operating temperature range (min, max)	-40°C...+125°C

Material properties

Main material	Aluminium die-cast
Other materials	Gasket: NBR
Colour	RAL 9005 black
RoHs conformity	Compliant
China RoHs - EFUP	E
REACH SVHC substances	No

Approvals / Standards

Certifications	DNV, BV
UL	ECBT2
cUL	ECBT8

General ordering information

EAN13 code	8015747141147
eCl@ss 8.1	27440202
ETIM 7.0	EC000437

Packaging Information

Packaging length	230,00 mm
Packaging height	110,00 mm
Packaging width	180,00 mm
Packaging weight	1,73 kg
Packaging volume	4,55 dm ³
Packaging description	Carton box
Packaging quantity	10 Pcs
Packaging EAN code	8015747299985
Sub-packaging length	167,00 mm
Sub-packaging height	21,00 mm
Sub-packaging width	60,00 mm
Sub-packaging weight	0,17 kg
Sub-packaging volume	0,21 dm ³
Sub-packaging description	Carton tray
Sub-packaging quantity	1 Pcs
Sub-packaging EAN barcode	8015747141468

Part number

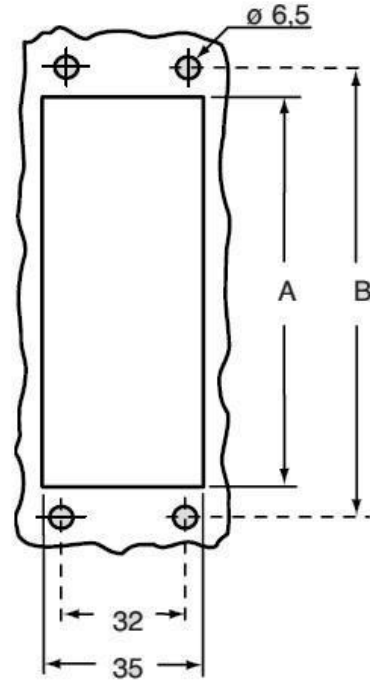
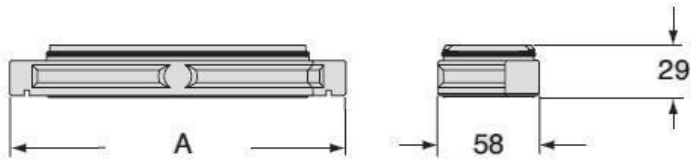
CGI 10



Catalogue drawings

Catalogue drawings

CGI



	A
CGI 06	133
CGI 10	146
CGI 16	166
CGI 24	193

	A	B
CGI 06 B	52	70
CGI 10 B	65	83
CGI 16 B	86	103
CGI 24 B	112	130