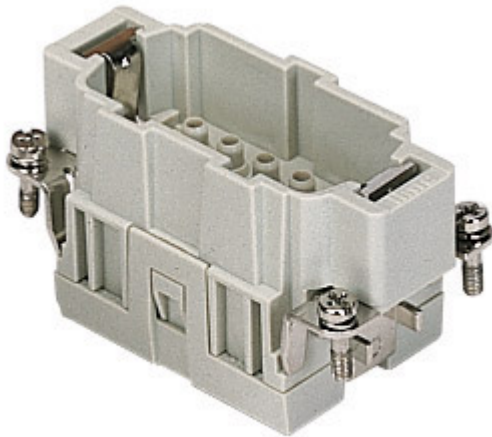



Part number

# CCEM 10



Male insert, CCE series, crimp connection, 10 poles + PE, 16 A 500 V 6 kV 3, size "57.27"

Product description		Material properties	
<b>Product type</b>	Insert	<b>Main material</b>	Polycarbonate (PC)
<b>Series</b>	CCE	<b>Colour</b>	RAL 7032 grey
<b>Connection type</b>	Crimp connection	<b>RoHs conformity</b>	Compliant
<b>Gender</b>	Male	<b>China RoHs - EFUP</b>	E
<b>N. of poles</b>	10 poles + 	<b>REACH SVHC substances</b>	No
<b>Size</b>	Size 57.27	Approvals / Standards	
Technical data		<b>Reference standard</b>	EN 61984:2009-06
<b>Current</b>	16 A	<b>Certifications</b>	CSA, CQC, DNV, BV, EAC
<b>Voltage</b>	500 V	<b>UL</b>	ECBT2, PVVA2
<b>Rated impulse withstand voltage</b>	6 kV	<b>cUL</b>	PVVA8
<b>Pollution degree</b>	3	General ordering information	
<b>Rated voltage according to UL/CSA</b>	600 V	<b>EAN13 code</b>	8015747112659
<b>IP degree of protection</b>	IP20 without enclosure, IP65/IP66/IP68/IP69 with enclosure	<b>eCl@ss 8.1</b>	27440205
Further technical details		<b>ETIM 7.0</b>	EC000438
<b>Characteristics according to EN 61984</b>	16A 500V 6kV 3; 16A 400/690V 6kV 2	Packaging Information	
<b>Mating cycles</b>	≥ 500	<b>Packaging length</b>	210,00 mm
<b>Insulation resistance</b>	≥ 10 GΩ	<b>Packaging height</b>	75,00 mm
<b>Contact resistance</b>	≤ 1 mΩ	<b>Packaging width</b>	180,00 mm
<b>Weight</b>	46,00 g	<b>Packaging weight</b>	1,78 kg
<b>Operating temperature range (min, max)</b>	-40 °C ... +125 °C	<b>Packaging volume</b>	2,84 dm <sup>3</sup>
<b>UL 94 flammability rating</b>	V-0	<b>Packaging description</b>	Carton box
		<b>Packaging quantity</b>	30 Pcs
		<b>Packaging EAN code</b>	8015747112819
		<b>Sub-packaging length</b>	67,00 mm
		<b>Sub-packaging height</b>	36,00 mm
		<b>Sub-packaging width</b>	180,00 mm
		<b>Sub-packaging weight</b>	0,30 kg
		<b>Sub-packaging volume</b>	0,43 dm <sup>3</sup>
		<b>Sub-packaging description</b>	Carton tray
		<b>Sub-packaging quantity</b>	5 Pcs
		<b>Sub-packaging EAN barcode</b>	8015747112826

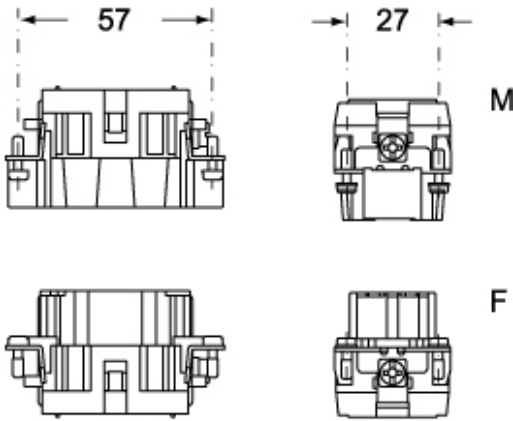
Part number

# CCEM 10

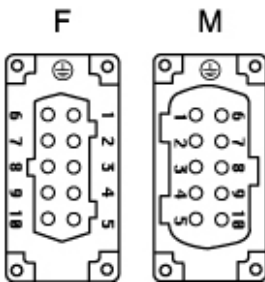


Catalogue drawings

## CCEM 10



## CCEF 10



Catalogue drawings

diagram CN, CNE and CCE 10 poles

