

MULTIPLE SOLUTIONS

for Industrial Applications



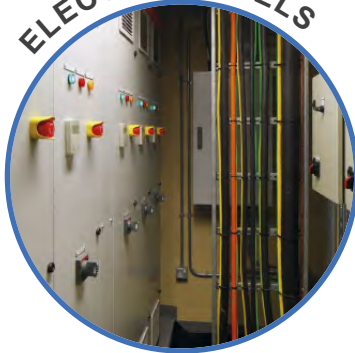


Choose for standard applications

SAFETY SYSTEMS



ELECTRIC PANELS



RADIO CONTROLS



POWER SUPPLIES



AUTOMATION

JEI® inserts are made of self-extinguishing thermoplastic resin UL 94V-0 with **galvanic tin plated contacts**. The wide range of inserts offered with their different wire connecting techniques guarantees flexibility of use and numerous choices. In conjunction with **thermoplastic or galvanised steel lever enclosures**.

They can be used in **non-aggressive industrial environments** and wherever there is a need for a connection with an **optimum quality/price ratio**.



Choose **jei**[®] for standard applications

Inserts

JK

Screw terminal connection
10A - 230/400V



JKS

Spring terminal connection
10A - 400V



JNE

Screw terminal connection
16A - 500V



JSE

Spring terminal connection
16A - 500V



JSH - SQUICH[®]

Spring terminal connection
without tools
16A - 500V



JDA

Screw terminal connection
16A - 250V



JDS

Spring terminal connection
10A - 400V



Multiple Solutions

Enclosures

JEI®-P

For standard connections

- Metallic
- Thermoplastic lever
- IP65



JEI®-V

For standard connections

- Metallic
- Galvanised steel lever
- Vertical closing
- IP66



COB

Mounting inside control panel

- Inspectable
- IP20



V-TYPE IP67

Watertightness to temporary immersions

- Metallic
- IP67 degree of protection accomplished by vertical closing
- Stainless steel lever



CK-CKA

For standard connections

- Insulating
- Metallic
- IP44, IP66/IP67



C-TYPE

For frequent opening/closing

- Metallic
- CLASS rotative lever
- IP65/IP66



CM - 830V

Insulated

- For CME and CMCE 16p inserts
- CLASS lever
- IP65/IP66



IL-BRID

For frequent opening/closing

- Metallic
- Stainless steel and thermoplastic material IL-BRID lever
- Reduces the stress of closing lever
- IP66



CZ7

Watertight enclosures

- Water-proof
- Rigid lever
- Stainless steel lever
- IP66/IP67 protection degree



CENTRAL LEVER

Reduces insert uncoupling stress

- For limited mounting spaces
- IP65



for Industrial Applications

Enclosures

T-TYPE

For standard connections

- Insulating
- Robust
- IP65



T-TYPE/W

For aggressive environments

- Insulating
- Robust
- Chemical resistant
- IP65



E-Xtreme®

Corrosion-proof

- 3.000 hours in salt spray tests
- Durable protection against damage caused by: stone chip, icing, salt mist, UV radiations and harsh gases



BIG-HOODS

Large and modular

- Multiple cable entries
- Simple and easy to inspect cabling
- Electronic card slots
- IP66



HYGIENIC

For food & beverage applications

- Thermoplastic material
- IP66/IP69

T-TYPE/H

- HNBR gaskets
- Range of temperatures: -40 °C / +70 °C

T-TYPE/C

- SILICONE gaskets
- Range of temperatures: -50 °C / +70 °C



W-TYPE

For aggressive environments

- Metallic with chrome treatment
- IP66



IP68

Watertightness to immersions

For aggressive environments

- Resistant to chemical agents
- Screw or bayonet locking
- IP68



LS-TYPE

Connections for stage equipment

- Metallic
- Thermoplastic lever
- IP65



EMC

For electromagnetic compatibility

- Conductive gaskets
- IP66



180 °C

For high temperature environments

- Metallic
- IP65





Choose **CLASS**

for heavy-duty applications

CQ

Crimp connection
10A/16A/40A



CDA - CDC - CSAH

Screw terminal connection
16A - 250V

Crimp connection
16A - 250V

SQUICH®
16A - 250V



CSS

Spring connection
16A - 500V
Dual terminal



CMCE - CME - CMSH

Crimp connection
16A - 830V

Screw terminal conn.
16A - 830V

Spring connection
16A - 830V



CP

Screw terminal connection
35A - 400/690V



CX

Crimp connection
10A/16A/40A



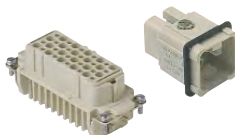
Screw terminal
connection
16A/80A/100A



Inserts

CD

Crimp connection
10A - 250V
10A - 50V



CDD

Crimp connection
10A - 250V



CQE - CQEE

Crimp connection
16A - 500V



CNE - CSE - CCE

Screw terminal connection
16A - 500V

Spring connection
16A - 500V

Crimp connection
16A - 500V



CSH - SQUICH®

Spring connection
without tools
16A - 500V



CDSH - SQUICH®

Spring connection
without tools
10A - 400V



CK - CKS - CKSH

Screw terminal connection
10A - 230/400V

Spring connection
10A - 400V

SQUICH®
10A - 400V



CT - CTS

Screw terminal connection
10A - 250V

Spring connection
10A - 250V



CT - CTSE

Screw terminal connection
16A - 400/500V

Spring connection



MIXO

Crimp connection
200A/100A/70A
40A/16A/10A/5A



MIXO

Screw terminal
connection - 40A



Spring connection
16A



MIXO

Data
RJ45-USB-POF-BUS-COAX

Pneumatic



Choose **CLASS** for heavy-duty applications



CLASS inserts are made of self-extinguishing thermoplastic resin UL 94V-0 with **silver or gold plated contacts**. The insertion in **metallic enclosures** with **stainless steel levers or IP68 locking screws** ensures a safe connection even in case of **high number of mating cycles**.

They can be used in aggressive industrial environments and wherever there is a need for heavy-duty applications.



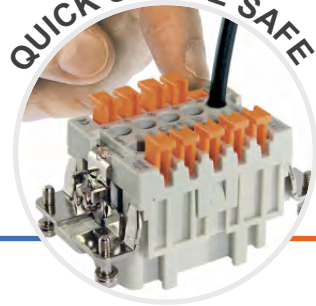
CLASS

for heavy-duty applications

JSH

SQUICH®

QUICK SIMPLE SAFE



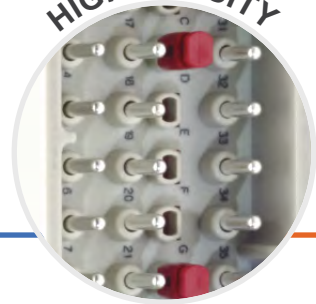
CSH

SQUICH®

JDS

SPRING

HIGH DENSITY



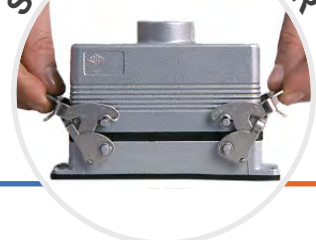
CDSH

SQUICH®

JEI®-V

V-TYPE

SAFETY RIGID LEVER



C7

V-TYPE

T-TYPE

INSULATING

STRONG RESISTANT



HYGIENIC

INSULATING

ILME S.p.A.
Via Marco Antonio Colonna, 9
20149 Milano - Italy
T +39 02345605.22 - F +39 02331058.13
www.ilme.com



Catalogues